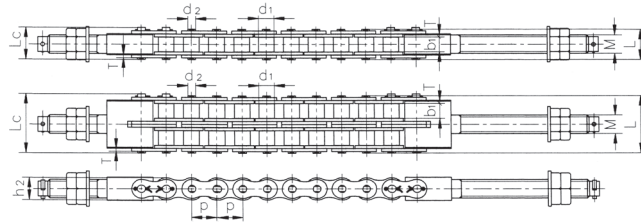


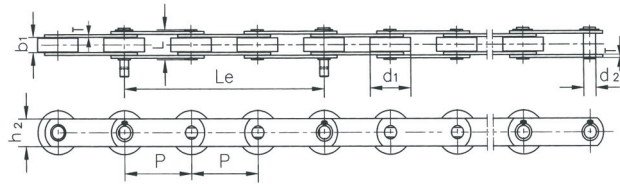
Various Speciality Chains

Car Parking Chains



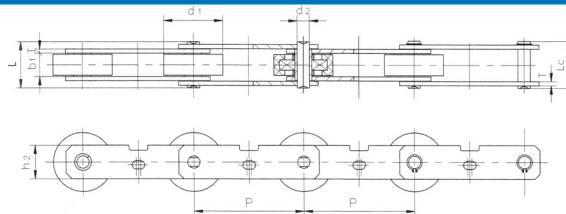
ISO Number	Pitch (P)	Roller Diameter (d1)	Width between Inner Plate (b1)	Pin Diameter (d2)	Pin Length (L)	Pin Length (Lc)	Inner Plate Depth (h2)	Plate Thickness (T)	Type of Bolt (M)	Ultimate Tensile Strength (Q)	Average Tensile Strength (Qo)	Weight (q)
	mm	max mm	min mm	max mm	max mm	max mm	max mm	max mm	mm	kN	kN	kg/m
16ALT-1	25.400	15.88	15.75	7.92	32.70	36.50	24.00	3.25	M 20	71.55	81.8	2.60
16ALT-2	25.400	15.88	15.75	7.92	62.70	65.80	24.00	3.25	M 20	143.10	166.3	5.15
20ALT-1	31.750	19.05	18.90	9.53	40.40	44.70	30.00	4.00	M 24	107.85	118.6	3.91
20ALT-2	31.750	19.05	18.90	9.53	76.40	80.50	30.00	4.00	M 24	215.70	234.4	7.80
20ALT-3	31.750	19.05	18.90	9.53	112.20	116.30	30.00	4.00	M 24	323.55	351.6	11.77
24ALT-1	38.100	22.23	25.22	11.10	50.30	54.30	35.70	4.80	M 30	149.20	161.1	5.62
24ALT-2	38.100	22.23	25.22	11.10	95.80	99.70	35.70	4.80	M 30	298.40	322.2	11.70

Escalator Step Chains



ISO Number	Pitch (P)	Roller Diameter (d1)	Width between Inner Plate (b1)	Pin Diameter (d2)	Pin Length (L)	Inner Plate Depth (h2)	Plate Thickness (T)	Distance between Steps (Le)	Ultimate Tensile Strength (Q)	Average Tensile Strength (Qo)	Weight (q)
	mm	max mm	min mm	max mm	max mm	max mm	max mm	mm	kN	kN	kg/m
ST131	131.330	80.00	27.00	24.00	54.50	50.00	5.00	394.00	180.00	198.0	9.00
T131	131.330	80.00	27.00	14.63	55.00	40.00	5.00	394.00	180.00	198.0	6.35
ST133	133.330	70.00	27.00	14.63	54.80	40.00	5.00	400.00	180.00	198.0	7.70
ST133Z	133.330	80.00	27.00	24.00	54.50	40.50	5.00	400.00	180.00	198.0	8.54

Passenger Conveyor Chains



ISO Number	Pitch (P)	Roller Diameter (d1)	Width between Inner Plate (b1)	Pin Diameter (d2)	Pin Length (L)	Pin Length (Lc)	Inner Plate Depth (h2)	Plate Thickness (T)	Ultimate Tensile Strength (Q)	Average Tensile Strength (Qo)	Weight (q)
	mm	max mm	min mm	max mm	max mm	max mm	max mm	max mm	kN	kN	kg/m
PT131	131.330	70.00	27.00	14.63	55.00	56.00	40.00	5.00	180.00	198.0	5.98
PT133	133.330	70.00	27.00	14.63	55.00	56.00	40.00	5.00	180.00	198.0	5.75