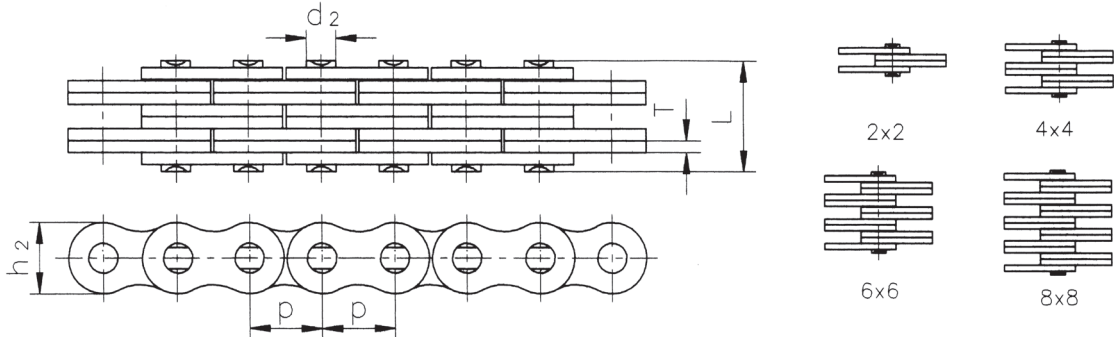


Leaf Chains



ISO Number	Pitch (P)	Chain Lacing	Inner Plate Depth (h2)	Plate Thickness (T)	Pin Diameter (d2)	Pin Length (L)	Ultimate Tensile Strength (Q)	Average Tensile Strength (Qo)	Weight (q)
	mm		max mm	max mm	max mm	max mm	min kN	kN	
LL0822	12.700	2x2	10.600	1.300	4.450	7.60	17.80	20.4	0.35
LL0844	12.700	4x4	10.600	1.300	4.450	15.60	36.40	40.7	0.84
LL0866	12.700	6x6	10.600	1.300	4.450	18.20	44.50	50.9	1.00
LL0888	12.700	8x8	10.600	1.300	4.450	23.60	62.20	71.2	1.33
LL1022	15.875	2x2	13.700	1.600	5.080	9.20	22.30	25.5	0.54
LL1044	15.875	4x4	13.700	1.600	5.080	15.80	44.50	51.0	1.06
LL1066	15.875	6x6	13.700	1.600	5.080	22.10	66.70	76.3	1.57
LL1088	15.875	8x8	13.700	1.600	5.080	28.80	89.00	101.9	2.10
LL1222	15.875	2x2	16.000	1.850	5.720	10.40	28.90	33.2	0.73
LL1244	19.050	4x4	16.000	1.850	5.720	17.90	57.80	66.4	1.44
LL1266	19.050	6x6	16.000	1.850	5.720	25.40	86.70	99.7	2.15
LL1288	19.050	8x8	16.000	1.850	5.720	32.90	115.60	132.9	2.84
LL1622	25.400	2x2	21.000	3.100	8.280	17.20	58.00	66.7	1.52
LL1644	25.400	4x4	21.000	3.100	8.280	29.60	116.00	140.0	2.90
LL1666	25.400	6x6	21.000	3.100	8.280	42.40	174.00	208.8	4.30
LL1688	25.400	8x8	21.000	3.100	8.280	54.90	232.00	278.0	5.71
LL2022	31.750	2x2	26.400	3.700	10.190	20.10	95.00	109.2	2.33
LL2044	31.750	4x4	26.400	3.700	10.190	33.80	190.00	218.5	4.40
LL2066	31.750	6x6	26.400	3.700	10.190	50.10	285.00	324.6	6.79
LL2088	31.750	8x8	26.400	3.700	10.190	64.00	380.00	435.1	8.90
LL2422	38.100	2x2	33.400	5.000	14.630	28.40	170.00	195.5	4.47
LL2444	38.100	4x4	33.400	5.000	14.630	46.30	340.00	380.8	8.22
LL2466	38.100	6x6	33.400	5.000	14.630	66.40	510.00	571.2	12.22
LL2488	38.100	8x8	33.400	5.000	14.630	86.60	680.00	775.2	16.30
LL2822	44.450	2x2	37.080	6.000	15.900	32.20	200.00	224.0	5.10
LL2844	44.450	4x4	37.080	6.000	15.900	56.40	400.00	448.0	9.90
LL2866	44.450	6x6	37.080	6.000	15.900	80.80	600.00	672.0	14.60
LL2888	44.450	8x8	37.080	6.000	15.900	105.20	800.00	896.0	19.40
LL3222	50.800	2x2	42.000	6.000	17.810	33.20	260.00	291.2	5.80
LL3244	50.800	4x4	42.000	6.000	17.810	56.60	520.00	582.4	12.30
LL3266	50.800	6x6	42.000	6.000	17.810	80.80	780.00	873.6	18.30
LL3288	50.800	8x8	42.000	6.000	17.810	105.00	1,050.00	1,176.0	24.00
LL4022	63.500	2x2	52.760	8.250	22.890	44.70	360.00	403.2	10.30
LL4044	63.500	4x4	52.760	8.250	22.890	77.90	780.00	873.6	20.00
LL4066	63.500	6x6	52.760	8.250	22.890	111.10	1,080.00	1,209.6	30.00
LL4088	63.500	8x8	52.760	8.250	22.890	145.50	1,560.00	1,747.2	39.10
LL4822	76.200	2x2	63.880	10.300	29.240	56.10	560.00	627.2	18.50
LL4844	76.200	4x4	63.880	10.300	29.240	97.40	1,120.00	1,554.4	35.70
LL4866	76.200	6x6	63.880	10.300	29.240	138.90	1,168.00	1,308.1	53.00
LL4888	76.200	8x8	63.880	10.300	29.240	182.40	2,240.00	2,508.8	70.40