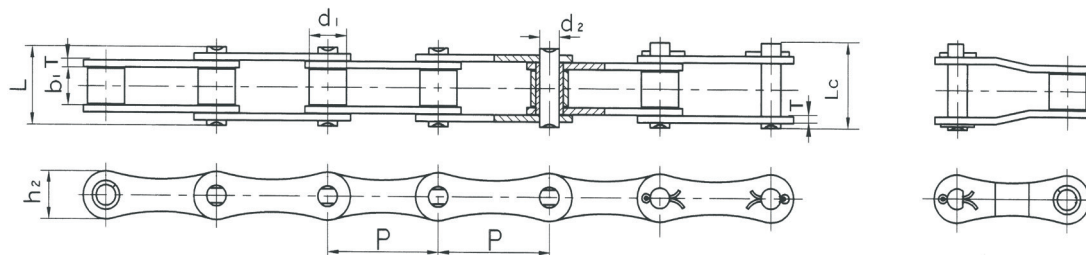
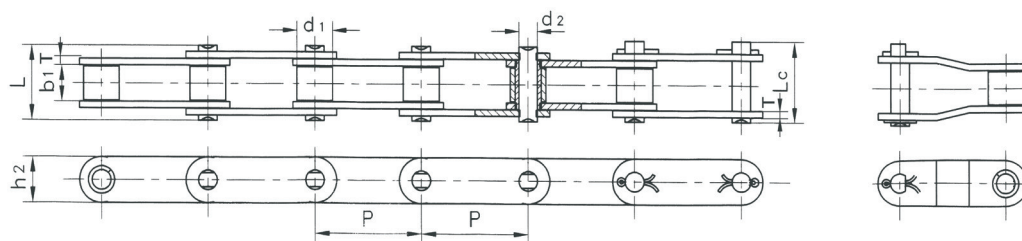


S type & C type Steel Agriculture Chains



ISO Number	Pitch (P)	Roller Diameter (d1)	Width between Inner Plate (b1)	Pin Diameter (d2)	Pin Length (L)	Pin Length (Lc)	Inner Plate Depth (h2)	Plate Thickness (T)	Ultimate Tensile Strength (Q)	Average Tensile Strength (Qo)	Weight (q)
	mm	max mm	min mm	max mm	max mm	max mm	max mm	max mm	kN	kN	kg/m
S32	29.210	11.43	15.88	4.45	26.70	28.80	13.20	1.80	8.00	21.6	0.86
S55	41.400	17.78	22.23	5.72	37.70	40.40	17.30	2.80	18.00	50.8	1.60
S42	34.930	14.27	19.05	7.00	34.30	37.00	19.80	2.80	27.00	36.1	1.66
S45	41.400	15.24	22.23	5.72	37.70	40.40	17.30	2.80	18.00	36.1	1.68
S52	38.100	15.24	22.23	5.72	37.70	40.40	17.30	2.80	18.00	36.1	1.80
S55R	41.400	17.78	22.23	8.90	41.00	44.00	22.40	3.50	45.00	73.1	2.49
S55RH	41.400	17.78	22.23	8.90	43.20	46.40	22.40	4.00	65.00	84.5	2.74
S62	41.910	19.05	26.20	5.72	40.30	43.00	17.30	2.50	26.70	36.1	1.87
S77	58.340	18.26	22.23	8.90	43.20	46.40	26.20	4.00	45.00	73.1	2.65
S88	66.270	22.86	28.58	8.90	49.80	53.00	26.20	4.00	45.00	73.1	3.25
CA650	50.800	25.00	27.80	9.53	40.40	44.70	25.00	4.00	80.00	95.5	3.49
A 557	41.400	17.78	20.24	8.00	37.40	40.60	23.10	3.10	55.60	74.3	2.64



ISO Number	Pitch (P)	Roller Diameter (d1)	Width between Inner Plate (b1)	Pin Diameter (d2)	Pin Length (L)	Pin Length (Lc)	Inner Plate Depth (h2)	Plate Thickness (T)	Ultimate Tensile Strength (Q)	Average Tensile Strength (Qo)	Weight (q)
	mm	max mm	min mm	max mm	max mm	max mm	max mm	max mm	kN	kN	kg/m
CA550	41.400	16.87	19.81	7.19	35.00	38.00	19.30	2.80	39.10	51.2	1.94
CA550V	41.400	16.80	19.05	8.28	36.10	39.10	22.00	3.00	55.00	68.7	2.24
CA555	41.400	16.87	12.70	7.19	29.70	33.10	19.30	3.10	39.10	56.0	1.83
CA557	41.400	17.78	20.24	8.00	37.40	40.60	23.10	3.10	55.61	74.3	2.20
CA620	42.010	17.91	24.51	7.19	41.80	45.20	20.20	3.25	39.10	55.1	2.35
CA2060H	38.100	11.91	12.70	5.94	29.74	31.72	17.45	3.25	31.28	40.5	1.50
CA2063H	38.100	11.89	12.70	5.94	29.40	34.20	19.30	3.25	31.28	40.5	1.65
38.4R	38.400	15.88	19.05	6.92	33.80	36.40	17.30	2.50	33.00	41.2	1.70
38.4V	38.400	15.88	18.00	6.92	33.80	36.40	17.30	3.00	40.00	50.0	1.83
38.4VB	38.400	15.88	19.05	8.28	36.10	39.40	20.50	3.00	50.00	62.5	2.17
S62F3	41.910	19.05	25.40	8.00	42.00	44.60	26.00	3.00	47.00	58.7	3.12