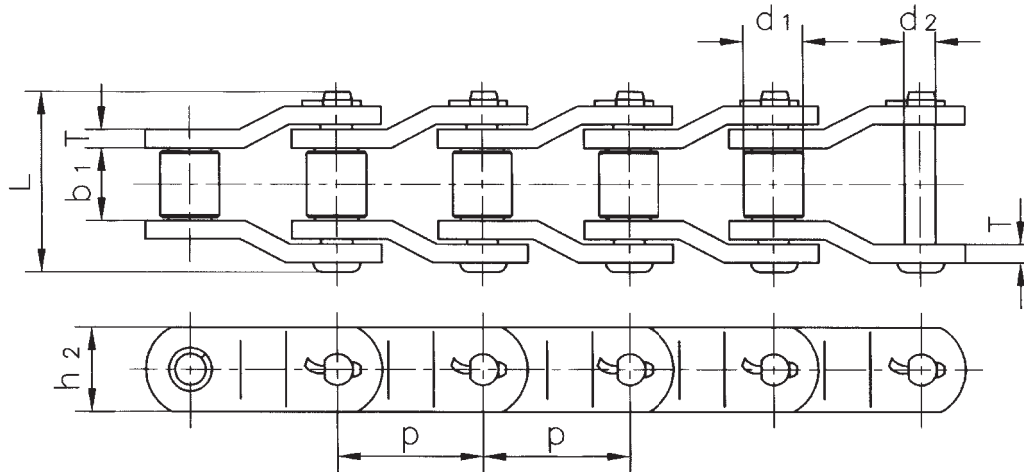


Heavy-duty Cranked-link Transmission Chains



ISO Number	Pitch (P)	Roller Diameter (d1)	Width between Inner Plate (b1)	Pin Diameter (d2)	Pin Length (L)	Inner Plate Depth (h2)	Plate Thickness (T)	Ultimate Tensile Strength (Q)	Average Tensile Strength (Qo)	Weight (q)
	mm	max mm	min mm	max mm	max mm	max mm	max mm	kN	kN	kg/m
2010	63.500	31.75	38.10	15.90	90.70	47.80	7.90	250.00	270.0	14.00
2510	78.100	31.75	36.90	16.00	94.80	40.00	8.00	271.00	292.6	10.72
2512	77.900	41.28	39.60	19.05	100.00	57.00	9.70	340.00	367.2	18.40
2814	88.900	44.45	38.10	22.25	117.60	60.50	12.70	470.00	507.6	25.10
3214	103.200	44.45	48.00	22.00	123.50	55.00	13.00	476.00	514.0	23.60
3315	103.450	45.24	49.30	23.85	134.90	63.50	14.20	550.00	594.0	27.30
3618	114.300	57.15	52.30	27.97	141.20	79.20	14.20	760.00	820.8	38.20
4020	127.000	63.50	69.90	31.78	168.10	91.90	15.70	990.00	1,069.2	52.10
MXS882	66.270	22.23	28.58	11.10	68.50	28.50	6.40	115.60	124.8	5.30
MXS3075	78.100	31.75	38.10	16.46	93.50	44.50	9.70	334.00	360.7	13.45
MXS1242	103.200	44.45	49.20	22.23	124.50	57.00	12.80	623.00	672.8	24.63
SS568H	77.900	41.30	39.70	19.05	97.60	57.00	9.50	515.00	556.0	13.95