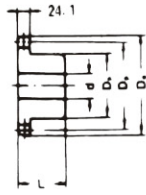


A TYPE



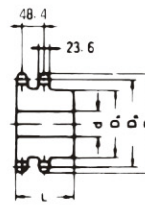
B TYPE



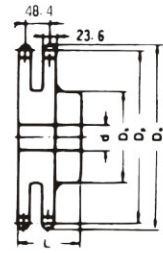
BW TYPE



DUPLEX B TYPE



DUPLEX BW TYPE



No. of Teeth	Pitch Dia. Dp	Outside Dia. Do	A Type		B Type / BW Type					Duplex B Type / Duplex BW Type							
			Bore: d	Approx. WT. (kg)	Material	Bore: d		Hub		Approx. WT. (kg)	Material	Bore: d		Hub		Approx. WT. (kg)	Material
						Min.	Max.	Dh	L			Min.	Max.	Dh	L		
10	123.29	138.0	25	1.80	S35C (B TYPE)	25	50	78	56	3.20	S35C (DUPLEX B TYPE)	26	50	80	100	6.00	S35C (DUPLEX B TYPE)
11	135.24	150.0	25	2.20		25	55	91	56	4.00		26	55	90	100	7.10	
12	147.21	162.0	25	2.60		25	60	98	56	4.80		28	65	100	100	8.80	
13	159.20	174.2	25	3.20		25	60	98	56	5.30		28	75	115	100	11.10	
14	171.22	186.2	25	3.60		25	65	107	56	6.30		28	80	120	100	11.40	
15	183.25	198.2	25	4.20		25	70	117	63	7.80		28	85	120	100	13.20	
16	195.29	210.3	25	5.00		25	70	117	63	8.40		28	90	140	100	14.40	
17	207.35	222.3	25	5.60		25	70	117	63	9.10		28	90	140	100	15.70	
18	219.41	234.3	25	6.20		25	70	117	63	9.90		28	100	150	100	18.00	
19	231.48	246.5	25	7.00		25	70	117	63	10.70		28	100	150	100	19.40	
20	243.55	258.6	25	7.80		25	80	127	63	12.10		28	100	150	100	21.00	
21	255.63	270.6	25	8.90		25	80	127	63	13.00		28	100	150	100	22.60	
22	267.72	282.7	30	9.80		30	80	127	63	13.40		30	100	147	100	32.60	
23	279.80	294.8	30	10.50		30	80	127	63	14.20		30	100	147	100	35.40	
24	291.90	306.8	30	11.50		30	80	127	63	15.20		30	100	157	100	37.00	
25	303.99	319.0	30	12.60		30	80	127	63	16.20		30	100	157	100	38.00	
26	316.09	331.0	30	14.00		30	80	127	63	17.20		30	100	157	100	40.00	
27	328.19	343.2	30	15.50		30	80	127	63	19.20		30	100	157	100		
28	340.29	355.2	30	16.50		30	85	137	71	20.90		30	100	157	100	42.60	
29	352.39	367.3	30	18.00		30	85	137	71	21.00		30	100	157	100		
30	364.50	379.5	30	19.00		30	85	137	71	23.20		30	100	157	100	43.90	
31	376.60	391.6	30	20.30	30	85	137	71	24.10	30	100	157	100				
32	388.71	403.7	30	21.50	SS41	30	85	137	71	25.70	SS41 (BW TYPE)	30	100	157	100	52.00	SS41 (DUPLEX BW TYPE)
33	400.82	415.8	30	22.40		30	85	137	71	26.80		30	100	157	100		
34	412.93	427.8	30	24.50		30	85	137	71	28.20		30	100	157	100		
35	425.04	440.0	30	26.00		30	85	137	71	29.70		30	100	157	100	56.80	
36	437.15	452.0	30	27.50		30	85	137	71	30.00		30	100	157	100		
37	449.26	464.2	30			30	85	137	71								
38	461.38	476.2	30	31.00		30	85	137	71	31.40		30	100	157	100		
39	473.49	488.5	30			30	85	137	71								
40	485.60	500.6	30	34.00		30	90	147	80	38.20		30	115	177	100	81.30	
41	497.72	512.6	30			30	90	147	80								
42	509.84	524.7	30	38.00		30	90	147	80	42.00		30	115	177	100		
43	521.95	536.8	30			30	90	147	80								
45	546.19	531.2	30	43.00		30	90	147	80	47.60		30	115	177	110	98.50	
48	582.54	597.4	30	49.00		30	90	147	80	53.00		30	115	177	110	110.00	
50	606.78	621.7	30	54.00		30	90	147	100	53.80		30	115	177	110	126.00	
54	655.26	670.2	30	60.00		30	90	147	100	54.70		30	115	177	110	129.00	
55	667.38	682.3	30			30	90	147	100			30	115	177	110	130.00	
56	679.50	694.4	30			30	90	147	100								
57	691.63	706.5	30		30	90	147	100									
58	703.75	718.6	30		30	90	147	100									
60	727.99	742.8	30	71.5	30	90	147	100	67.80	30	115	177	110	131.60			
65	788.60	803.4	30	89.2	30	90	147	100	78.30								
70	849.22	864.2	30	104.00	30	105	167	112	82.30								
75	909.84	924.8	30	119.00	30	105	167	112	90.40								

NOTE: 1. B-type solid sprockets over 21 teeth made by S35C are available.