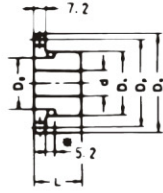


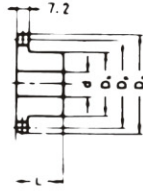
A TYPE



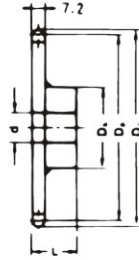
B TYPE



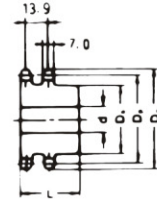
B TYPE



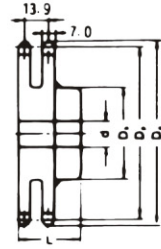
BW TYPE



DUPLEX B TYPE



DUPLEX BW TYPE



Dimension:mm

No. of Teeth	Pitch Dia. Dp	Outside Dia. Do	A Type		Material	B Type / BW Type					Material	Duplex B Type / Duplex BW Type					Material			
			Bore: d	Approx. WT. (kg)		Bore: d		Hub		Approx. WT. (kg)		Bore: d		Hub		Approx. WT. (kg)				
						Min.	Max.	Dh	L			Min.	Max.	Dh	L					
8	33.20	37.2	9	0.04	SS41	9	12.7	24.6	22.2	0.10	*									
9	37.13	41.0	9	0.04		9	14	28	22	0.11	*									
10	41.10	45.2	10	0.05		9	18	32	22	0.14	*	13	15	28	35	0.24				
11	45.08	48.7	10	0.06		20	23	37	22	0.19	*	13	18	30	35	0.27				
12	49.07	53.0	10	0.08		20	25	40	22	0.22	*	14	22	35	35	0.34				
13	53.07	57.4	10	0.10		13	23	37	22	0.23	*	14	24	39	35	0.39				
14	57.07	61.8	10	0.11		13	26	42	22	0.28	*	14	26	43	35	0.47				
15	61.08	65.5	12	0.15		13	28	46	22	0.34	*	14	28	47	35	0.56				
16	65.10	69.5	12	0.17		13	30	50	22	0.40	*	14	30	50	35	0.65				
17	69.12	73.6	12	0.20		13	32	54	22	0.46	*	14	32	54	35	0.75				
18	73.14	77.8	12	0.22		13	32	57	22	0.51	*	14	35	59	35	0.85				
19	77.16	81.7	12	0.24		13	38	62	22	0.59	*	14	38	63	35	0.98				
20	81.18	85.8	12	0.26		14	42	67	25	0.76	*	14	40	67	40	1.30				
21	85.21	89.7	12	0.30		14	45	71	25	0.85	*	14	40	68	40	1.40				
22	89.24	93.8	12	0.32		14	48	75	25	0.95	*	14	45	72	40	1.60				
23	93.27	98.2	12	0.35		14	48	77	25	1.00	*	14	45	76	40	1.70				
24	97.30	101.8	12	0.37		14	40	63	25	0.84	SS35C (B TYPE)	14	50	80	40	1.90				
25	101.33	105.8	12	0.40		14	40	63	25	0.88		18	54	84	40	2.10				
26	105.36	110.0	12	0.45		14	40	63	25	0.92		18	54	88	40	2.30				
27	109.40	114.0	12	0.50		14	40	63	25	0.96		18	60	92	40	2.60				
28	113.43	118.0	12	0.51		14	40	63	25	1.00		18	65	96	40	2.80				
29	117.46	122.0	12	0.56		14	40	63	25	1.05		18	65	96	40	2.90				
30	121.50	126.1	14	0.60		14	40	63	25	1.10		18	65	100	40	3.00				
31	125.53	130.2	14	0.64		14	40	63	25	1.20		18	65	100	40	3.01				
32	129.57	134.3	14	0.68		14	45	68	28	1.30		23	65	100	50	3.00				
33	133.61	138.4	14	0.70		14	45	68	28	1.30		23	65	100	50	3.10				
34	137.64	142.6	14	0.75		14	45	68	28	1.30	23	65	100	50	3.10					
35	141.68	146.7	14	0.83		14	45	68	28	1.40	23	65	100	50	3.10					
36	145.72	151.0	15	0.90		17	45	68	28	1.40	23	65	100	50	3.40					
38	153.79	158.6	15	0.95		17	45	68	28	1.50	23	65	100	50	3.50					
40	161.87	166.8	15	1.06	17	45	68	32	1.60	23	65	100	50	3.60						
41	165.91	171.4	15	1.15	17	48	73	32	1.80											
42	169.95	175.4	15	1.20	17	48	73	32	1.90	23	65	93	50	4.50						
43	173.98	179.7	15	1.23	17	48	73	32	2.00											
44	178.02	183.8	15	1.30	17	48	73	32	2.10											
45	182.06	188.0	15	1.36	17	48	73	32	2.20	23	65	93	50	4.60						
48	194.18	200.3	15	1.56	17	48	73	32	2.40	23	65	93	50	5.60						
50	202.26	208.3	15	1.70	17	48	73	32	2.54	23	65	93	50	5.90						
54	218.42	224.1	15	2.00	17	48	73	32	2.84	23	65	93	50	6.91						
60	242.66	248.6	16	2.50	17	48	73	32	3.30	23	65	93	50	8.20						
65	262.87	269.0	16	2.87	17	52	83	32	3.90	23	65	93	50	9.50						
70	283.07	289.0	16	3.30	19	52	83	32	4.30	23	65	93	50	10.90						
75	303.28	309.2	16	4.50	19	52	83	32	4.80	23	65	108	50	12.50						
80	323.49	329.4	16	5.50	19	52	83	32	5.40	23	65	108	50	13.90						
85	343.69	349.0	19	5.80	19	52	83	32	5.80											
90	363.90	369.9	19	6.00	19	52	83	32	6.00											

NOTE: 1. Sprocket marked with an asterisk (*) has a groove at the external circumference of hub. Groove diameters (Dg) are :8T=28.00mm, 9T=31.00mm, 10T=25.00mm, 11T=30.00mm, 12T=32.00mm.
 2. 9-12 teeth of duplex B type sprockets have a groove at the external circumference of hub. Refer to single B type sprocket about width and position of the groove.
 3. B-type solid sprockets over 30 teeth made by S35C are available.