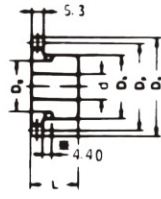
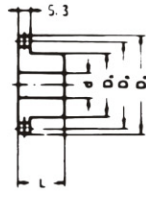
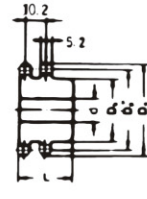
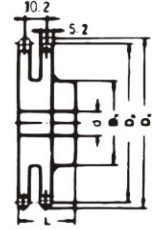


**A TYPE**

**B TYPE**

**B TYPE**

**BW TYPE**

**DUPLEX B TYPE**

**DUPLEX BW TYPE**


Dimension:mm

No. of Teeth	Pitch Dia. Dp	Outside Dia. Do	A Type			B Type / BW Type					Duplex B Type / Duplex BW Type							
			Bore: d	Approx. WT.(kg)	Material	Bore:d		Hub		Approx. WT.(Kg)	Material	Bore:d		Hub		Approx. WT.(kg)	Material	
						Min.	Max.	Dh	L			Min.	Max.	Dh	L			
8	24.88	28.0	9	0.02	SS41	8	10	19	19	0.02	*							
9	27.84	31.0	9	0.02		8	11	22	20	0.06	*							
10	30.84	34.0	9	0.02		8	12	25	20	0.08	*	9	13	20	30	0.10		
11	33.81	37.0	9	0.03		8	14	27	20	0.09	*	10	13	20	30	0.11		
12	36.80	40.0	9	0.03		9	16	31	20	0.12	*	10	17	27	30	0.14		
13	39.80	43.0	9	0.04		9	18	32	20	0.12	*	10	20	27	30	0.17		
14	42.81	46.3	9	0.04		9	16	32	20	0.12		10	20	32	30	0.21		
15	45.81	49.3	9	0.05		9	22	35	20	0.16		10	25	35	30	0.25		
16	48.82	52.3	9	0.05		9	23	37	20	0.19		10	25	38	30	0.29		
17	51.84	55.3	10	0.07		11	25	41	20	0.22		10	25	41	30	0.34		
18	54.85	58.3	10	0.07		11	28	44	20	0.25		10	28	44	35	0.45		
19	57.87	61.3	10	0.09		11	29	47	20	0.28		10	30	47	35	0.51		
20	60.89	64.3	10	0.06		11	32	50	20	0.32		12	32	50	35	0.64		
21	63.91	68.0	11	0.11		11	32	53	20	0.36		12	32	50	40	0.64		
22	66.93	71.0	11	0.11		11	32	53	20	0.37		12	35	55	40	0.67		
23	69.95	73.5	11	0.11		11	32	53	20	0.38		12	35	60	40	0.78		
24	72.97	77.0	11	0.14		11	32	53	22	0.43		15	38	60	40	0.82	S35C (DUPEX B TYPE)	
25	76.00	80.0	11	0.16		11	32	53	22	0.44		15	38	60	40	0.92		
26	79.02	83.0	11	0.16		11	32	53	22	0.45		15	42	65	45	0.96		
27	82.05	86.0	11	0.17		11	32	53	22	0.46	S35C (B TYPE)	15	42	65	45	1.22		
28	85.07	89.0	11	0.18		11	32	53	22	0.48		15	42	65	45	1.26		
29	88.10	92.0	11	0.20		11	32	53	22	0.49		15	42	65	45	1.30		
30	91.12	94.37	11	0.23		11	32	53	22	0.51		15	42	65	45	1.34		
31	94.15	98.3	11	0.24		11	32	53	22	0.52		15	42	65	45	1.39		
32	97.18	101.3	12	0.27		11	32	53	22	0.54		15	42	65	45	1.43		
33	100.20	104.3	12	0.28		11	32	53	22	0.56		15	42	65	45	1.48		
34	103.23	107.3	12	0.29		11	32	53	22	0.57		15	42	65	45	1.53		
35	106.26	110.4	12	0.30		11	32	53	22	0.59		15	42	65	45	1.58		
36	109.29	113.4	12	0.32		11	32	53	22	0.61		15	42	65	45	1.80		
37	112.31	116.4	12	0.37		11	32	63	22	0.77								
38	115.34	119.5	12	0.41		11	32	63	25	0.82		15	42	65	45	2.00		
39	118.37	122.5	12	0.42		11	32	63	25	0.83								
40	121.40	125.5	12	0.43		11	32	63	25	0.85		15	42	65	45	2.30		
41	124.43	128.5	12	0.45		11	42	63	25	0.85								
42	127.46	131.6	12	0.47		15	40	63	25	0.92		19	55	83	45			
43	130.48	134.6	12	0.47		15	40	63	25	0.92								
44	133.53	137.6	12	0.47		15	40	63	25	0.92		19	55	83	45			
45	136.53	140.7	12	0.50		15	40	63	25	0.95		19	55	83	45			
46												19	55	83	45			
48	145.64	149.7	12	0.55		15	40	63	25	1.00	SS41 (BW TYPE)	19	55	83	45		SS41 (DUPEX BW TYPE)	
50	151.69	155.7	12	0.59		15	40	63	25	1.05		19	55	83	45			
52												19	55	83	45			
54	163.80	167.8	12	0.68		15	40	63	25	1.20		19	65	93	50			
60	181.99	186.0	12	0.87		15	40	63	25	1.30		19	65	93	50			
65	197.15	201.6	14	1.00		15	42	68	25	1.60		19	65	93	50			
70	212.29	216.7	14	1.18		15	42	68	25	1.70		19	65	93	50			
75	227.46	231.9	14	1.37	15	42	68	25	1.80	19		65	93	50				
80	242.62	247.1	15	1.62	15	42	68	25	1.90	19		65	93	50				

NOTE:1. Sprocket marked with an asterisk (\*) has a groove at the external circumference of hub. Groove diameters (Dg) are :8T=14.00mm, 9T=16.00mm,10T=18.00mm,11T=22.00mm,12T=24.00mm, 13T=28.00mm.  
 2. 8-13 teeth of duplex B type sprockets have a groove at the external circumference of hub. Refer to single B type sprocket about width and position of the groove.  
 3. B-type solid sprocket over 45 teeth made by S35C are available.