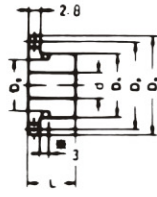


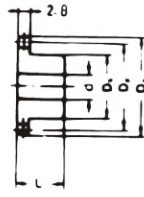
A TYPE



B TYPE



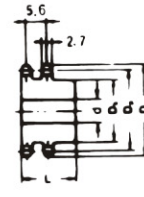
B TYPE



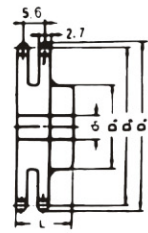
BW TYPE



DUPLEX B TYPE



DUPLEX BW TYPE



Dimension:mm

No. of Teeth	Pitch Dia. Dp	Outside Dia. Do	A Type		Material	B Type / BW Type					Material	Duplex Btype / Duplex BW Type					Material
			Bore: d	Approx. WT.(kg)		Min.	Max.	Hub		Approx. WT(Kg)		Min.	Max.	Hub		Approx. WT(kg)	
								Dh	L					Dh	L		
8	20.9	24.0	6	0.007	SS41	6	7	13	12	0.014	*	8	9	13	18	0.021	S35C (DUPEX B TYPE)
9	23.39	26.6	6	0.009		6	9	15	12	0.020	*	8	10	15	18	0.029	
10	25.89	29.2	8	0.01		8	10	17	12	0.022	*	8	11	17	18	0.036	
11	28.39	31.7	8	0.013		8	10	18	13	0.029	*	10	12	19	18	0.045	
12	30.91	34.2	8	0.015		8	14	20	13	0.036	*	10	14	21	18	0.056	
13	33.42	36.7	8	0.018		8	16	23	13	0.047	*	10	14	24	18	0.072	
14	35.95	39.2	8	0.021		8	18	25	13	0.056	*	10	16	26	18	0.086	
15	38.48	41.7	8	0.024		8	19	28	13	0.069	*	10	16	29	18	0.104	
16	41.01	44.3	8	0.028		8	20	30	14	0.085	*	10	18	32	20	0.137	
17	43.53	46.8	8	0.031		8	20	30	14	0.088	*	10	20	34	20	0.156	
18	46.07	49.3	8	0.035		8	20	30	14	0.092	*	10	22	37	20	0.182	
19	48.61	51.9	8	0.039		8	20	30	14	0.096	*	10	24	39	20	0.204	
20	51.14	54.4	8	0.044		8	20	30	14	0.101	*	10	25	40	20	0.224	
21	53.68	57.0	8	0.048		8	24	35	14	0.128	*	10	25	40	20	0.236	
22	56.21	59.5	8	0.053		8	24	35	14	0.133	*	10	25	40	20	0.250	
23	58.75	62.0	8	0.058		8	24	35	14	0.138	*	10	25	40	20	0.264	
24	61.29	64.6	8	0.063		8	24	35	14	0.143	*	10	25	40	20	0.279	
25	63.83	67.5	8	0.069		8	24	35	14	0.149	*	10	25	40	20	0.296	
26	66.37	69.5	10	0.074		10	28	40	16	0.275	*	12	30	50	22	0.400	
27	68.91	72.2	10	0.080		10	28	40	16	0.281	*	12	30	50	22	0.417	
28	71.45	74.8	10	0.086		10	28	40	16	0.287	*	12	30	50	22	0.434	
29	73.99	77.3	10	0.092		10	28	40	16	0.293	*	12	30	50	22	0.452	
30	76.53	79.8	10	0.099		10	28	40	16	0.300	S35C (B TYPE)	12	30	50	22	0.472	
31	79.08	82.4	10	0.106		10	28	40	16	0.307	S35C (B TYPE)	12	38	60	22	0.585	
32	81.61	84.9	10	0.112		10	28	40	16	0.313	S35C (B TYPE)	12	38	60	22	0.603	
33	84.16	87.5	10	0.120		10	28	40	16	0.321	S35C (B TYPE)	12	38	60	22	0.626	
34	86.70	90.0	10	0.127		10	28	40	16	0.328	S35C (B TYPE)	12	38	60	22	0.647	
35	89.25	92.5	10	0.135		10	28	40	16	0.336	S35C (B TYPE)	12	38	60	22	0.670	
36	91.79	95.0	10	0.143		10	28	40	16	0.344	S35C (B TYPE)	12	38	60	22	0.693	
37	94.33	97.6	10	0.152		10	28	40	16	0.353	S35C (B TYPE)	12	38	60	22	0.719	
38	96.88	100.2	10	0.160	10	28	40	16	0.361	S35C (B TYPE)	12	38	60	22	0.743		
39	99.42	102.7	10	0.168	10	28	40	16	0.369	S35C (B TYPE)	12	38	60	22	0.766		
40	101.97	105.3	10	0.177	10	28	40	16	0.378	S35C (B TYPE)	12	38	60	22	0.793		
41	104.51	107.8	12	0.185	12	40	60	20	0.549	SS41 (DUPEX BW TYPE)	14	42	65	25	0.938		
42	107.05	110.4	12	0.194	12	40	60	20	0.558	SS41 (DUPEX BW TYPE)	14	42	65	25	0.965		
43	109.60	112.9	12	0.203	12	40	60	20	0.567	SS41 (DUPEX BW TYPE)	14	42	65	25	0.992		
45	114.69	118.0	12	0.233	12	40	60	20	0.587	SS41 (DUPEX BW TYPE)	14	42	65	25	1.050		
48	122.32	125.6	12	0.251	12	40	60	20	0.618	SS41 (DUPEX BW TYPE)	14	42	65	25	1.142		
50	127.41	130.7	12	0.276	12	40	60	20	0.640	SS41 (DUPEX BW TYPE)	14	42	65	25	1.207		
54	137.59	140.9	14	0.321	14	40	60	20	0.680	SS41 (DUPEX BW TYPE)	16	50	80	25	1.557		
57	145.22	148.6	14	0.358	14	40	60	20	0.717	SS41 (DUPEX BW TYPE)	16	50	80	25	1.666		
60	152.85	156.2	14	0.397	14	40	60	20	0.756	SS41 (DUPEX BW TYPE)	16	50	80	25	1.744		
65	165.58	169.2	16	0.466	16	40	60	20	0.818	SS41 (DUPEX BW TYPE)	20	55	83	30	2.219		
70	178.31	182.4	16	0.541	16	40	60	20	0.893	SS41 (DUPEX BW TYPE)	20	55	83	30	2.443		
76	193.59	197.7	20	0.636	20	42	68	25	1.210	SS41 (DUPEX BW TYPE)	24	65	93	30	2.936		
85	216.50	220.6	20	0.797	20	42	68	25	1.371	SS41 (DUPEX BW TYPE)	24	65	93	30	3.417		
95	241.96	241.6	20	0.997	20	42	68	25	1.571	SS41 (DUPEX BW TYPE)	24	65	93	30	4.016		
100	254.68	258.9	20	1.105	20	45	73	25	1.775	SS41 (DUPEX BW TYPE)	24	65	93	30	4.298		
110	280.15	284.3	20	1.339	20	45	73	30	2.160	SS41 (DUPEX BW TYPE)	24	65	93	30	5.042		
114	290.33	294.5	20	1.438	20	45	73	30	2.259	SS41 (DUPEX BW TYPE)	24	65	93	30	5.340		

- NOTE: 1. Sprocket marked with an asterisk (\*) has a groove at the external circumference of hub. Groove diameters (Dg) are: 8T=10.30mm, 9T=12.79mm, 10T=15.29mm, 11T=17.79mm, 13T=22.82mm, 15T=27.88mm.  
 2. 8-19 teeth of duplex B type sprockets have a groove at the external circumference of hub. Groove diameters (Dg) can be calculated as (Dg=Dp-5.3×2). Refer to single B type sprocket about width and position of the groove.  
 3. B-type solid sprockets over 48 teeth made by S35C are available.