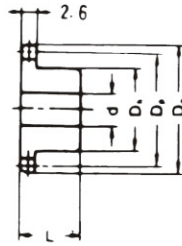


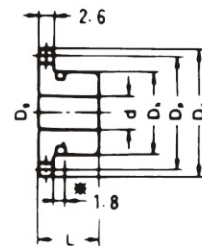
A TYPE



B TYPE



B TYPE



Dimension:mm

No. of Teeth	Pitch Dia. Dp	Outside Dia. Do	A Type			B Type					
			Bore: d	Approx. WT.(kg)	Material	Bore: d		Hub		Approx. WT.(kg)	Material
						Min.	Max.	Dh	L		
8	15.67	18.0	5	0.004	SS41	5	6	9.8	10	0.008	*
9	17.54	19.9	5	0.005		5	6.5	11.5	10	0.010	*
10	19.42	21.7	6	0.005		6	7	13	10	0.011	*
11	21.30	23.6	6	0.007		6	9	14	10	0.014	*
12	23.18	25.4	6	0.008		6	10	16	10	0.018	*
13	25.05	27.3	8	0.009		8	12	18	10	0.021	
14	26.96	29.2	8	0.011		8	14	20	10	0.026	
15	28.86	31.0	8	0.012		8	14	20	10	0.027	
16	30.76	33.0	8	0.014		8	14	20	13	0.037	
17	32.65	35.0	8	0.016		8	14	20	13	0.039	
18	34.55	36.9	8	0.018		8	14	20	13	0.041	
19	36.44	38.8	8	0.020		8	14	20	13	0.043	
20	38.34	40.7	8	0.022		8	14	20	13	0.045	
21	40.25	42.6	8	0.025		8	19	25	13	0.062	
22	42.16	44.5	8	0.027		8	19	25	13	0.064	
23	44.06	46.4	8	0.030		8	19	25	13	0.067	
24	45.96	48.3	8	0.033		8	19	25	13	0.070	
25	47.87	50.2	8	0.035		8	19	25	13	0.072	
26	49.76	52.1	8	0.038		8	22	30	15	0.103	
27	51.67	54.0	8	0.041		8	22	30	15	0.106	
28	53.58	55.9	8	0.045		8	22	30	15	0.110	
29	55.50	57.8	8	0.048		8	22	30	15	0.113	
30	57.42	59.8	8	0.051		8	22	30	15	0.116	
31	59.31	61.7	8	0.055		8	22	30	15	0.120	
32	61.21	63.6	8	0.059		8	22	30	15	0.124	
33	63.11	65.5	8	0.062		8	22	30	15	0.127	
34	65.02	67.4	8	0.066		8	22	30	15	0.131	
35	66.93	69.3	8	0.070		8	22	30	15	0.135	
36	68.84	71.2	8	0.074		8	22	30	15	0.139	S35C
37	70.75	73.1	8	0.079		8	22	30	15	0.144	
38	72.66	75.0	8	0.083		8	22	30	15	0.148	
39	74.54	76.9	8	0.088		8	22	30	15	0.153	
40	76.47	78.9	8	0.095		8	22	30	15	0.157	
41	78.38	80.8	10	0.096		10	30	40	16	0.223	
42	80.28	82.7	1	0.101		10	30	40	16	0.228	
43	82.19	84.7	10	0.106		10	30	40	16	0.233	
44	84.10	86.6	10	0.111		10	30	40	16	0.238	
45	86.01	88.5	10	0.116		10	30	40	16	0.243	
46	87.92	90.4	10	0.121		10	30	40	16	0.248	
47	89.93	92.3	10	0.127		10	30	40	16	0.254	
48	91.749	94.2	10	0.132		10	30	40	16	0.259	
49	3.64	96.1	10	0.138		10	30	40	16	0.265	
50	95.55	98.0	10	0.144		12	40	50	20	0.403	
57	108.93	111.4	12	0.187		12	40	50	20	0.447	
65	124.18	126.6	14	0.242		12	40	50	20	0.502	
76	145.19	147.6	16	0.332		12	50	60	20	0.720	
85	162.37	164.8	16	0.416		14	50	60	25	0.909	
95	181.47	183.9	16	0.520		14	50	60	25	1.015	
114	217.75	220.2	16	0.751	14	50	60	25	1.245		
125	238.75	241.2	16	0.903	14	50	60	25	1.397		

NOTE:1. Sprocket marked with an asterisk (*)has a groove at the external circumference of hub. Groove diameters (Dg) are: 8T=8.00mm, 9T=10.00mm, 10T=11.50mm, 11T=13.50mm, 12T=15.00mm, 13T=17.00mm, 14T=19.00mm.