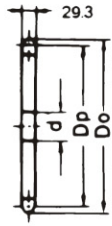
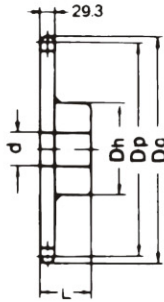


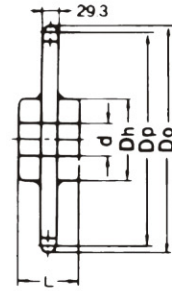
A TYPE



BW TYPE



CW TYPE



Dimension:mm

No. Of Teeth	Pitch Dia. Dp	Outside Dia. Do	A Type		Material	B Type / BW Type				Material	Duplex B Type / Duplex BW Type				Material	
			Bore: d	Approx. WT.(kg)		Bore:d		Hub			Approx. WT.(kg)	Bore:d	Hub			Approx. WT.(kg)
						Min.	Max.	Dh	L				Min.	Max.		
10	164.39	186	25	4.80	SS41	25	70	105	63	6.80	SS41 (BW TYPE)					SS41 (CW TYPE)
11	180.31	204	25	5.79		25	80	117	63	8.30						
12	196.28	220	25	6.86		25	89	127	63	9.90						
13	212.27	237	25	8.03		25	95	137	71	12.50						
14	228.30	253	25	9.28		25	95	137	71	13.80						
15	244.33	269	30	10.63		30	95	137	71	15.20						
16	260.39	286	30	12.08		30	103	147	71	17.40						
17	276.46	302	30	13.61		30	103	147	71	18.90						
18	292.55	319	30	15.23		30	103	147	71	20.60						
19	308.64	335	30	16.95		30	103	147	71	22.30						
20	324.74	351	30	18.75		30	103	147	71	24.30						
21	340.84	368	30	20.65		30	103	147	71	26.10						
22	356.96	384	35	22.64		35	118	167	80	30.20		35	105	157	120	
23	373.07	400	35	25.10		35	118	167	80	32.20		35	105	157	120	
24	389.19	416	35	26.90		35	118	167	80	34.40		35	105	157	120	
25	405.32	433	35	29.16		35	118	167	80	36.60		35	105	157	120	
26	421.45	449	35	31.52		35	118	167	80	38.40		35	105	157	120	
27	437.58	465	35	34.20		35	118	167	80			35	105	157	120	
28	453.72	481	35	36.51		35	118	167	80	46.28		35	105	157	120	
29	469.85	498	35			35	118	167	80			35	105	157	120	
30	485.99	514	35	41.86		35	118	167	100	52.30		35	105	157	120	
31	502.13	530	35			35	118	167	100			35	105	157	120	
32	518.28	546	35	47.95		35	118	167	100	62.00		35	105	157	120	
33	566.71	595	35	57.24		35	118	167	100	66.90		35	105	157	130	
36	582.68	611	35	60.53		35	118	167	100			35	110	157	130	
38	615.17	644	35	67.37		35	118	167	100			35	110	157	130	
40	647.47	676	35	74.57		35	118	167	110	85.80		35	110	167	140	
42	679.78	708	35	82.14		35	118	167	110			35	110	167	140	
45	728.25	757	35	94.71		35	132	187	125	92.40		35	110	167	140	
48	776.72	806	35	107.61		35	132	187	125			35	110	167	140	
50	809.04	838	35	116.67	35	132	187	125		35	110	167	140			
54	873.68	903	35	135.88	35	132	187	125	100.90	35	110	167	140			
55	889.84	919	35		35	132	187	125		35	110	167	140			
60	970.65	1000	35	168.14	35	132	187	125	135.40	35	110	167	140			

NOTE:1.B-type&C-type solid sprockets made by S35C are available.