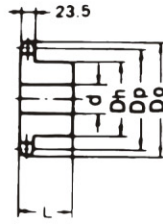
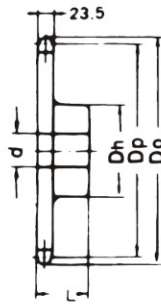
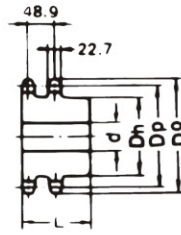
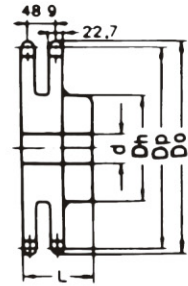


A TYPE

B TYPE

BW TYPE

DUPLEX B TYPE

DUPLEX BW TYPE


Dimension:mm

No. Of Teeth	Pitch Dia. Dp	Outside Dia. Do	A Type			B Type / BW Type					Duplex B Type / Duplex BW Type						
			Bore: d	Approx. WT.(kg)	Material	Bore:d		Hub		Approx. WT.(kg)	Material	Bore:d		Hub		Approx. WT.(kg)	Material
						Min.	Max.	Dh	L			Min.	Max.	Dh	L		
10	143.84	163	25	2.90		25	60	91	56	4.40		28	55	88	100	8.80	
11	157.78	178	25	3.40		25	73	106	56	5.50		28	65	103	100	10.20	
12	171.74	193	25	4.00		25	80	117	56	6.60		28	70	117	100	12.60	
13	185.74	207	25	4.70		25	80	117	56	7.90		28	85	137	110	16.70	
14	199.76	221	25	5.50		25	89	127	63	9.30		28	85	137	110	18.90	
15	213.79	236	25	6.30		25	89	127	63	10.10	SS35C	28	90	147	120	23.30	SS35C
16	227.84	250	25	7.20		25	89	127	63	11.00	(B TYPE)	28	90	147	120	25.80	(DUPLEX
17	241.91	264	25	8.10		25	89	127	63	12.00		28	90	147	125	29.20	B TYPE)
18	255.98	279	25	9.10		25	89	127	63	13.00		28	100	157	125	33.00	
19	270.06	293	25	10.30		25	95	137	71	15.60		28	100	157	125	36.40	
20	284.15	307	25	11.40		25	95	137	71	16.70		28	100	157	125	39.60	
21	298.24	322	25	12.60		30	95	137	71	17.90		28	100	157	125	43.10	
22	312.34	336	30	13.80		30	95	137	71	18.40		32	100	167	125	47.40	
23	326.44	350	30	15.10		30	95	137	71	18.90		32	100	167	125	51.30	
24	340.54	364	30	16.40		30	95	137	71	20.90		32	100	167	125	55.00	
25	354.65	379	30	17.80		30	103	147	80	24.10		32	100	167	125	59.20	
26	368.77	393	30	19.20		30	103	147	80	25.50		32	100	167	125	63.50	
27	382.88	407	30	20.70		30	103	147	80	27.10		32	100	167	125		
28	397.00	421	30	22.20		30	103	147	80	29.20		32	100	167	125	72.40	
29	411.12	435	30	23.80		30	103	147	80			32	100	167	125		
30	425.24	450	30	25.50		30	103	147	80	31.50		32	110	177	130	84.40	
31	439.37	464	30	27.20	SS41	30	103	147	80			32	110	177	130		
32	453.49	478	30	29.00		30	110	157	90	34.00		32	110	177	130	95.00	
33	467.62	492	30	30.80		30	110	157	90			32	110	177	130		
34	481.75	506	30	32.70		30	110	157	90	39.70		32	110	177	130		
35	495.88	521	30	34.60		30	110	157	90	40.10		32	110	177	130	112.0	
36	510.01	535	30	36.90		30	110	157	90		SS41 (BW TYPE)	32	110	177	130		
37						30	110	157	90								
38	538.27	563	30	41.00		30	110	157	90			32	110	177	130		SS41
39						30	110	157	90								
40	566.54	591	30	45.40		30	110	157	90	53.10		32	120	187	135	145.00	(DUPLEX
41						30	110	157	90								
42	594.81	620	30	50.00		30	110	157	90			32	120	187	135		BW
43						30	110	157	90								
44						30	110	157	90								(TYPE)
45	637.22	662	30	57.30		30	118	167	100	67.60		32	120	187	135	183.00	
46						30	118	167	100								
48	679.63	705	30	65.20		30	118	167	100	74.30		32	120	187	135	205.00	
49						30	118	167	100								
50	707.91	733	30	70.60		30	118	167	100	79.70		32	120	187	135	221.00	
54	764.47	789	30	82.70		30	118	167	100	91.80		32	120	187	135	255.00	
55	778.61	804	30	85.70		30	118	167	100			32	120	187	135		
60	849.32	875	30	120.00		38	118	167	110	111.20		32	120	187	135	317.00	

NOTE:1.B-type solid sprockets over 21teeth made by S35C are available.