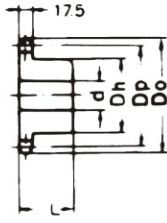
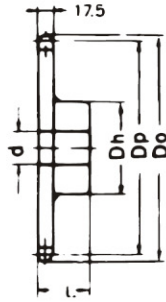
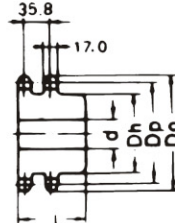
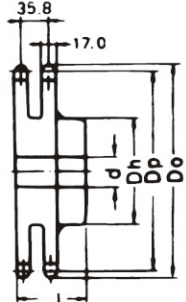


A TYPE

B TYPE

BW TYPE

DUPLEX B TYPE

DUPLEX BW TYPE


Dimension:mm

No. of Teeth	Pitch Dia. Dp	Outside Dia. Do	A Type			B Type / BW Type					Duplex B Type / Duplex BW Type						
			Bore: d	Approx. WT.(kg)	Material	Bore:d		Hub		Approx. WT.(kg)	Material	Bore:d		Hub		Approx. WT.(kg)	Material
						Min.	Max.	Dh	L			Min.	Max.	Dh	L		
10	102.74	116	20	0.90		20	40	65	50	1.90	*	22	45	70	80	3.00	
11	112.70	127	20	1.10		20	50	75	50	2.30	*	22	50	80	80	4.00	
12	122.67	138	20	1.40		20	55	86	50	2.90	*	28	55	90	80	5.00	
13	132.67	148	20	1.70		20	55	88	50	3.10	*	28	60	100	80	6.00	
14	142.68	158	20	2.00		20	55	88	50	3.60		28	70	110	80	7.10	
15	152.71	168	20	2.30		20	60	98	50	4.20		28	80	120	80	7.10	
16	162.74	179	20	2.60		20	60	98	50	4.60		28	85	130	80	7.70	
17	172.79	189	20	2.90		20	65	107	50	5.30		28	85	130	80	8.90	
18	182.84	199	20	3.30		20	65	107	50	5.70		28	85	130	80	9.60	
19	192.90	209	20	3.60		20	65	107	50	6.10		28	85	130	90	12.70	
20	202.96	220	20	4.00		20	65	107	50	6.50		30	85	130	90	13.50	
21	213.03	230	20	4.50		20	65	107	50	7.00		30	85	130	90	14.30	
22	223.10	240	20	4.90		20	70	117	56	7.90		30	85	127	90	15.60	
23	223.17	250	20	5.30		20	70	117	56	8.30	S35C	30	85	127	90	16.80	
24	243.25	260	20	5.90		20	70	117	56	8.80	(BTYPE)	30	85	137	90	17.80	
25	253.32	270	20	6.50		20	70	117	56	9.30		30	85	137	90	23.89	
26	263.40	281	20	6.90		20	70	117	56	9.70		30	85	137	90	25.39	
27	273.49	291	20	7.50		20	70	117	56	10.30		30	85	137	90		
28	283.57	301	20	8.10		20	70	117	56	10.90		30		137	90	28.89	
29	293.66	311	20	8.80		20	70	117	56	11.60		30	85	137	90		
30	303.75	321	20	9.40		20	70	117	56	12.10		30	85	137	90	24.30	
31	313.83	331	20	10.00		20	70	117	56	12.90		30	85	137	90		
32	323.92	341	20	10.70		20	70	117	56	13.40		30	85	137	90	29.00	
33	334.01	352	20	11.60	SS41	20	70	117	56	14.50		30	85	137	90		
34	344.11	362	20	12.40		20	80	127	63	16.40		30	85	137	90		
35	354.20	372	20	13.00		20	80	127	63	17.00		30	85	137	90	30.90	
36	364.29	382	20	13.80		20	80	127	63	17.80		30	85	137	90		
37	374.38	392	20	14.50		20	80	127	63	18.50		30	85	137	90		
38	384.48	402	20	16.00		20	80	127	63	19.00		30	85	137	90		
39	394.57	412	20	16.50		20	80	127	63	19.50		30	85	137	90		
40	404.67	422	20	17.50		20	80	127	63	20.50		30	95	147	100	40.70	
41	414.77	433	20	18.50		20	80	127	63	21.50		30	95	147	100		
42	424.86	443	20	19.50		20	80	127	63	22.50		30	95	147	100		
43	434.96	453	20	20.50		20	80	127	63	23.50	SS41	30	95	147	100		
44	445.06	463	20	21.00		20	80	127	63	24.00	(BW TYPE)	30	95	147	100		
45	455.16	473	20	22.00		20	80	127	63	25.00		30	95	147	100	49.30	
48	485.45	503	20	26.00		20	80	127	63	29.00		30	95	147	100		
50	505.65	524	20	27.00		20	80	127	63	30.00		30	95	147	100		
54	546.05	564	20	31.00		20	90	147	80	37.40		30	95	147	100		
55	556.15	574	20	32.00		20	90	147	80	38.40		30	95	147	100		
60	606.67	625	20	39.00		20	90	147	80	45.40		30	95	147	100	68.30	
65	657.17	675	20	48.00		20	90	147	80	54.40							
70	707.68	726	20	52.00		20	90	147	100	62.70							
75	758.20	777	30	63.00		20	90	147	100	73.70							
85	859.23	878	30	82.00													
90	909.75	928	30	92.00													

NOTE:1.B-type solid sprockets over 21teeth made by S35C are available.