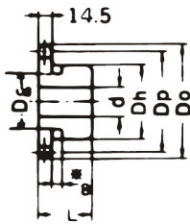


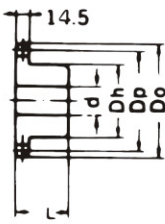
A TYPE



B TYPE



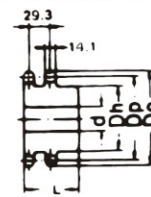
B TYPE



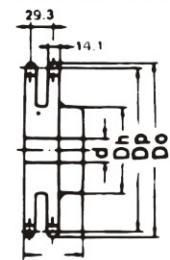
BW TYPE



DUPLEX B TYPE



DUPLEX BW TYPE



Dimension:mm

No. of Teeth	Pitch Dia. Dp	Outside Dia. Do	A Type		Material	B Type / BW Type					Material	Duplex B Type / Duplex BW Type					Material		
			Bore: d	Approx. WT.(kg)		Bore:d		Hub		Approx. WT.(kg)		Bore:d	Hub		Approx. WT.(kg)				
						Min.	Max.	Dh	L				Min.	Max.		Dh		L	
8	66.37	76	11	0.64		11	25.4	44.5	41.3	0.7	*								
9	74.27	85	11	0.54		11	35	58	40	0.8	*								
10	82.19	93	17	0.58		17	32	52	40	0.9		21	35	58	63	1.80			
11	90.16	102	17	0.62		17	38	60	40	1.2		21	35	60	63	2.40			
12	98.14	110	17	0.75		17	42	67	40	1.5		23	40	69	63	2.50			
13	106.14	118	17	0.87		17	48	77	40	1.9		23	50	80	63	3.10			
14	114.15	127	17	1.02		17	48	77	40	2.0		23	54	88	63	3.70			
15	122.17	135	20	1.20		20	60	93	40	2.6		23	65	95	63	4.30			
16	130.20	143	20	1.35		20	60	93	40	2.8		23	65	100	71	5.50			
17	138.23	151	20	1.54		20	60	93	40	3.0		23	65	100	71	5.90			
18	146.27	159	20	1.75		20	60	93	40	3.2		23	80	120	71	7.00			
19	154.32	167	20	1.95		20	60	93	40	3.4		23	80	120	71	7.40			
20	162.37	176	20	2.15		20	60	93	40	3.6		23	85	130	71	7.60			
21	170.42	184	20	2.41		20	60	93	40	3.8		23	85	130	71	7.80			
22	178.48	192	20	2.63		20	65	107	45	4.8		25	80	117	71	8.80			
23	186.54	200	20	2.90		20	65	107	45	5.1		25	80	117	71	9.30			
24	194.60	208	20	3.20		20	65	107	45	5.4		25	80	117	80	10.50			
25	202.66	216	20	3.45		20	65	107	45	5.6		25	80	117	80	11.10			
26	210.72	224	20	3.70		20	65	107	45	5.9		25	80	117	80	11.70			
27	218.79	233	20	3.96		20	65	107	45	6.1		25	80	117	80				
28	226.86	241	20	4.26		20	65	107	45	6.5		25	80	117	80	13.00			
29	234.93	249	20	4.65		20	65	107	45	6.8		25	80	117	80				
30	243.00	257	20	5.00		20	65	107	45	7.1		25	80	117	80	14.20			
31	251.07	265	20	5.30		20	65	107	45	7.5		25	80	117	80				
32	259.14	273	20	5.60		20	65	107	45	7.8		25	80	117	80	16.50			
33	267.21	281	20	6.00	SS41	20	65	107	45	8.2		25	80	117	80				
34	275.29	289	20	6.40		20	65	107	45	8.5		25	80	117	80				
35	283.36	297	20	6.85		20	65	107	45	8.9		25	80	117	80	17.90			
36	291.43	306	20	7.20		20	70	117	50	10.1		25	80	117	80				
37	299.51	314	20	7.40		20	80	117	50	10.5									
38	307.58	322	20	8.00		20	70	117	50	10.9		25	85	127	80	21.00			
40	323.74	338	20	9.00		20	70	117	50	11.8	SS41 (BW TYPE)	25	85	127	90	23.70			
41	331.81	346	20	9.42		20	80	117	50	12.5									
42	339.89	354	20	9.75		20	70	117	50	12.7		25	85	127	90	27.20			
43	347.97	362	20	10.34		20	80	117	50	13.2									
44	356.04	370	20	10.65		20	80	117	50	13.8									
45	364.12	378	20	11.30		20	70	117	50	14.2		25	85	127	90	28.40			
46	372.20	387	20	11.80		20	80	117	50	15.1									
47	380.20	395	20	12.20		20	80	117	50	15.4									
48	388.36	403	20	13.00		20	70	117	50	15.8		25	85	127	90	32.00			
49	396.44	411	20	14.00		20	80	117	50	17.0									
50	404.52	419	20	14.80		20	70	117	50	17.6		25	85	127	90	35.00			
54	436.84	451	20	17.00		20	70	117	50	19.2		25	85	127	90	38.50			
60	485.33	500	20	21.00		20	70	117	50	23.1		25	85	127	90	46.20			
65	525.73	540	20	25.00		20	70	117	50	27.1		25	85	127	90	55.00			
70	566.15	581	20	28.30		20	70	117	50	32.1		25	85	127	90	65.00			
75	606.56	621	20	32.00		20	80	127	63	36.2		25	90	138	90	72.00			
80	646.97	662	20	38.00		20	80	127	63	42.2		25	90	138	90	89.00			
85	687.39	702	25	42.00		20	80	127	63										
90	727.80	743	25	48.00		20	80	127	63										

NOTE: 1. Sprocket marked with an asterisk(\*) has a groove at the external circumference of hub. Groove diameters (Dg) are :8T=36.50mm, 9T=44.60mm.  
 2. B-type solid sprockets over 21 teeth made by S35c are available.