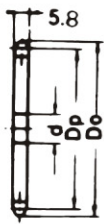
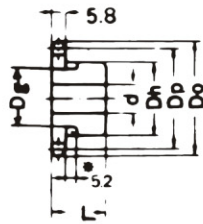


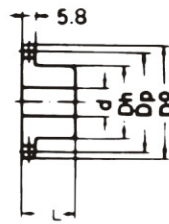
A TYPE



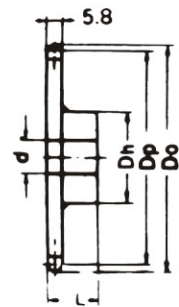
B TYPE



B TYPE



BW TYPE



Dimension:mm

No. of Teeth	Pitch Dia. Dp	Outside Dia. Do	A Type		Material	B Type / BW Type				Approx. WT.(kg)	Material
			Bore: d	Approx. WT.(kg)		Bore: d		Hub.			
						Min.	Max.	Dh.	L		
8	33.20	38	9			9	12.7	24.6	22.2	0.10	
9	37.13	42	9	0.04		9	14	28	22	0.11	
10	41.10	46	10	0.05		9	18	32	22	0.14	
11	45.08	51	10	0.06		10	23	37	22	0.19	
12	49.07	55	10	0.08		10	25	40	22	0.22	
13	53.07	59	10	0.10		13	23	37	22	0.23	
14	57.07	63	10	0.11		13	26	42	22	0.28	
15	61.08	67	12	0.15		13	28	46	22	0.34	
16	65.10	71	12	0.17		13	30	50	22	0.40	
17	69.12	76	12	0.20		13	32	54	22	0.46	
18	73.14	80	12	0.22		13	32	57	22	0.51	
19	77.16	84	12	0.24		13	38	62	22	0.59	
20	81.18	88	12	0.26		14	42	67	25	0.76	
21	85.21	92	12	0.30		14	45	71	25	0.85	
22	89.24	96	12	0.32		14	48	75	25	0.95	
23	93.27	100	12	0.35		14	48	77	25	1.00	
24	97.30	104	12	0.37		14	40	63	25	0.84	S35c (B TYPE)
25	101.33	108	12	0.40		14	40	63	25	0.88	
26	105.36	112	12	0.45		14	40	63	25	0.92	
27	109.40	116	12	0.50		14	40	63	25	0.96	
28	113.43	120	12	0.51		14	40	63	25	1.00	
29	117.46	124	12	0.56		14	40	63	25	1.05	
30	121.50	128	14	0.60	SS41	14	40	63	25	1.10	
31	125.53	133	14	0.64		14	40	63	25	1.20	
32	129.57	137	14	0.68		14	45	68	28	1.30	
33	133.61	141	14	0.70		14	45	68	28	1.30	
34	137.64	145	14	0.75		14	45	68	28	1.30	
35	141.68	149	14	0.83		14	45	68	28	1.40	
36	145.72	153	15	0.90		17	45	68	28	1.40	
38	153.79	161	15	0.95		17	45	68	28	1.50	
40	161.87	169	15	1.06		17	45	68	28	1.60	
41	165.91	173	15	1.15		17	48	73	32	1.80	
42	169.95	177	15	1.20	17	48	73	32	2.00		
43	173.98	181	15	1.23	17	48	73	32			
44	178.02	185	15	1.30	17	48	73	32			
45	182.06	189	15	1.36	17	48	73	32	2.10		
48	194.18	201	15	1.53	17	48	73	32	2.30		
50	202.26	209	15	1.70	17	48	73	32	2.40		
54	218.42	226	15	2.00	17	48	73	32	2.80		
60	242.66	250	16	2.50	17	48	73	32	3.20		
65	262.67	270	16	2.87	17	52	83	32	3.90		
70	283.07	290	16	3.30	19	52	83	32	4.30		
75	303.28	311	16	4.50	19	52	83	32	4.80		
80	323.49	331	16	5.50	19	52	83	32	5.40		
85	343.69	351	19	5.80	19	52	83	32	5.80		
90	363.90	371	19	6.00	19	52	83	32	6.00		

NOTE: 1.Sprocket marked with an asterisk(*)has a groove at the external circumference of hub.Groove diameters (Dg) are :8T=19.70mm, 9T=23.80mm,10T=28.18mm,11T=32.00mm,12T=36.40mm.
2.B-type solid sprockets over 35 teeth made by S35C are available.