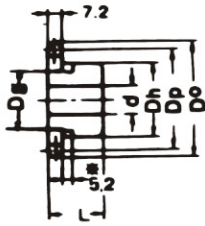
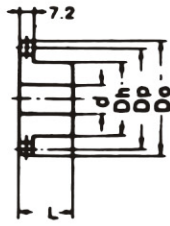
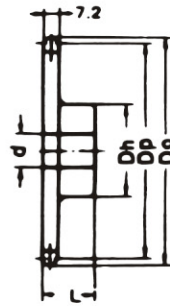
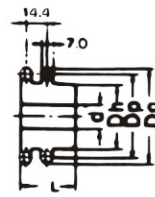
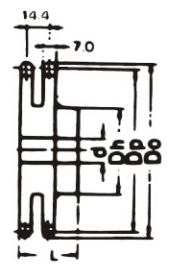


A TYPE

B TYPE

B TYPE

BW TYPE

DUPLEX B TYPE

DUPLEX BW TYPE


Dimension:mm

No. of Teeth	Pitch Dia. Dp	Outside Dia. Do	A Type		Material	B Type / BW Type				Material	Duplex B Type / Duplex BW Type					Material			
			Bore: d	Approx. WT. (kg)		Bore: d		Hub			Approx. WT. (kg)	Bore: d		Hub			Approx. WT. (kg)		
						Min.	Max.	Dh	L			Min.	Max.	Dh	L				
8	33.20	38	9			9	12.7	24.6	22.2	0.10	*								
9	37.13	42	9	0.04		9	14	28	22	0.11	*								
10	41.10	46	10	0.05		9	18	32	22	0.14	*	13	15	28	35	0.24			
11	45.08	51	10	0.06		10	23	37	22	0.19	*	13	18	30	35	0.27			
12	49.07	55	10	0.08		10	25	40	22	0.22	*	14	22	35	35	0.34			
13	53.07	59	10	0.10		13	23	37	22	0.23		14	24	39	35	0.39			
14	57.07	63	10	0.11		13	26	42	22	0.28		14	26	43	35	0.47			
15	61.08	67	12	0.15		13	28	46	22	0.34		14	28	47	35	0.56			
16	65.10	71	12	0.17		13	30	50	22	0.40		14	30	50	35	0.65			
17	69.12	76	12	0.20		13	32	54	22	0.46		14	32	54	35	0.75			
18	73.14	80	12	0.22		13	32	57	22	0.51		14	35	59	35	0.85			
19	77.16	84	12	0.24		13	38	62	22	0.59		14	38	63	35	0.98			
20	81.18	88	12	0.26		14	42	67	25	0.76		14	40	67	40	1.30			
21	85.21	92	12	0.30		14	45	71	25	0.85		14	40	68	40	1.40			
22	89.24	96	12	0.32		14	48	75	25	0.95		14	45	72	40	1.60			
23	93.27	100	12	0.35		14	48	77	25	1.00		14	45	76	40	1.70			
24	97.30	104	12	0.37		14	40	63	25	0.84	S35C (B TYPE)	14	50	80	40	1.90			
25	101.33	108	12	0.40		14	40	63	25	0.88		18	54	84	40	2.10			
26	105.36	112	12	0.45		14	40	63	25	0.92		18	54	88	40	2.30			
27	109.40	116	12	0.50		14	40	63	25	0.96		18	60	92	40	2.60			
28	113.43	120	12	0.51		14	40	63	25	1.00		18	65	96	40	2.80			
29	117.46	124	12	0.56		14	40	63	25	1.05		18	65	96	40	2.90			
30	121.50	128	14	0.60	SS41	14	40	63	25	1.10		18	65	100	40	3.00			
31	125.53	133	14	0.64		14	40	63	25	1.20		18	65	100	40	3.01			
32	129.57	137	14	0.68		14	45	68	28	1.30		23	65	100	50	3.00			
33	133.61	141	14	0.70		14	45	68	28	1.30		23	65	100	50	3.10			
34	137.64	145	14	0.75		14	45	68	28	1.30		23	65	100	50	3.10			
35	141.68	149	14	0.83		14	45	68	28	1.40		23	65	100	50	3.10			
36	145.72	153	15	0.90		17	45	68	28	1.40		23	65	100	50	3.40			
38	153.79	161	15	0.95		17	45	68	28	1.50		23	65	100	50	3.50			
40	161.87	169	15	1.06		17	45	68	28	1.60		23	65	100	50	3.60			
41	165.91	173	15	1.15		17	48	73	32	1.80									
42	169.95	177	15	1.20		17	48	73	32	2.00		23	65	93	50	4.50			
43	173.98	181	15	1.23		17	48	73	32										
44	178.02	185	15	1.30		17	48	73	32										
45	182.06	189	15	1.36		17	48	73	32	2.10	SS41 (BW TYPE)	23	65	93	50	4.60			
48	194.18	201	15	1.53		17	48	73	32	2.30		23	65	93	50	5.60			
50	202.26	209	15	1.70		17	48	73	32	2.40		23	65	93	50	5.90			
54	218.42	226	15	2.00		17	48	73	32	2.80		23	65	93	50	6.91			
60	242.66	250	16	2.50		17	48	73	32	3.20		23	65	93	50	8.20			
65	262.67	270	16	2.87		17	52	83	32	3.90		23	65	93	50	9.50			
70	283.07	290	16	3.30		19	52	83	32	4.30		23	65	93	50	10.90			
75	303.28	311	16	4.50		19	52	83	32	4.80		23	65	108	50	12.50			
80	323.49	331	16	5.50		19	52	83	32	5.40		23	65	108	50	13.90			
85	343.69	351	19	5.80		19	52	83	32	5.80									
90	363.90	371	19	6.00		19	52	83	32	6.00									

NOTE: 1. Sprocket marked with an asterisk(*) has a groove at the external circumference of hub. Groove diameters (Dg) are :8T=18.60mm, 9T=22.66mm, 10T=26.92mm, 11T=32.00mm, 12T=36.40mm.
 2. B-type solid sprockets over 35 teeth made by S35c are available.