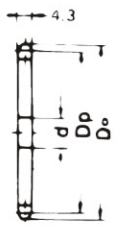
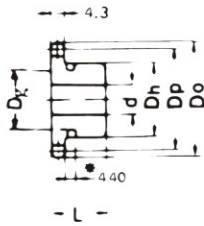


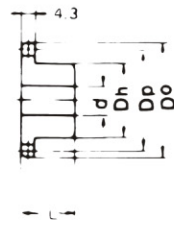
A TYPE



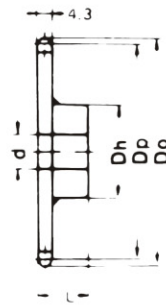
B TYPE



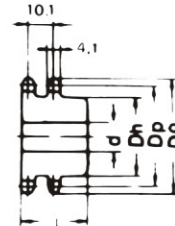
B TYPE



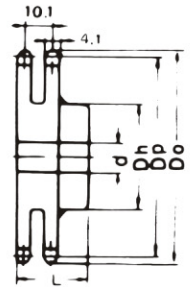
BW TYPE



DUPLEX B TYPE



DUPLEX BW TYPE



Dimension:mm

No. of Teeth	Pitch Dia. Dp	Outside Dia. Do	A Type		Material	B Type / BW Type				Material	Duplex B Type / Duplex BW Type				Material				
			Bore: d	Approx. WT. (kg)		Dore: d		Hub			Approx. WT. (Kg)	Material	Bore: d			Hub		Approx. WT. (kg)	Material
						Min.	Max.	Dh	L				Min.	Max.		Dh	L		
8	24.88	28	9	0.02	SS41	8	10	19	19	0.02	*								
9	27.84	31	9	0.02		8	11	22	20	0.06	*								
10	30.84	35	9	0.02		8	12	25	20	0.08	*	9	13	20	30	0.10	S35C (DUPLEX B TYPE)		
11	33.81	38	9	0.03		8	14	27	20	0.09	*	10	13	20	30	0.11			
12	36.80	41	9	0.03		9	16	31	20	0.12	*	10	17	27	30	0.14			
13	39.80	44	9	0.04		9	18	32	20	0.12		10	20	27	30	0.17			
14	42.81	47	9	0.04		9	16	30	20	0.12		10	20	32	30	0.21			
15	45.81	51	9	0.05		9	22	35	20	0.16		10	25	35	30	0.25			
16	48.82	54	9	0.05		9	23	37	20	0.19		10	25	38	30	0.29			
17	51.84	57	10	0.07		11	25	41	20	0.22		10	25	41	30	0.34			
18	54.85	60	10	0.07		11	28	44	20	0.25		10	28	44	35	0.45			
19	57.87	63	10	0.09		11	29	47	20	0.28		10	30	47	35	0.51			
20	60.89	66	10	0.09		11	32	50	20	0.32		12	32	50	40	0.64			
21	63.91	69	11	0.11		11	32	53	20	0.36		12	32	50	40	0.64			
22	66.93	72	11	0.11		11	32	53	20	0.37		12	35	55	40	0.67			
23	69.95	75	11	0.11		11	32	53	20	0.38		12	35	60	40	0.78			
24	72.97	78	11	0.14		11	32	53	22	0.43		15	38	60	40	0.82			
25	76.00	81	11	0.16		11	32	53	22	0.44		15	38	60	40	0.92			
26	79.02	84	11	0.16		11	32	53	22	0.45	S35C (B TYPE)	15	42	65	45	0.96			
27	82.05	87	11	0.17		11	32	53	22	0.46		15	42	65	45	1.22			
28	85.07	90	11	0.18	11	32	53	22	0.48		15	42	65	45	1.26				
29	88.10	93	11	0.20	11	32	53	22	0.49		15	42	65	45	1.30				
30	91.12	96	11	0.23	11	32	53	22	0.51		15	42	65	45	1.34				
31	94.15	99	11	0.24	11	32	53	22	0.52		15	42	65	45	1.39				
32	97.18	102	12	0.27	11	32	53	22	0.54		15	42	65	45	1.43				
33	100.20	105	12	0.28	11	32	53	22	0.56		15	42	65	45	1.48				
34	103.23	109	12	0.29	11	32	53	22	0.57		15	42	65	45	1.53				
35	106.26	112	12	0.30	11	32	53	22	0.59		15	42	65	45	1.58				
36	109.29	115	12	0.32	11	32	53	22	0.61		15	42	65	45	1.80				
37	112.31	118	12	0.37	11	32	63	22	0.77										
38	115.34	121	12	0.41	11	32	63	25	0.82		15	42	65	45	2.00				
39	118.37	124	12	0.42	11	32	63	25	0.83										
40	121.40	127	12	0.43	11	32	63	25	0.85		15	42	65	45	2.30				
41	124.43	129	12	0.45	11	42	63	25	0.85										
42	127.46	133	12	0.47	15	40	63	25	0.92		19	55	83	45					
43	130.48	135	12	0.47	15	40	63	25	0.92										
44	133.53	138	12	0.47	15	40	63	25	0.92		19	55	83	45					
45	136.55	142	12	0.50	15	40	63	25	0.95		19	55	83	45					
46											19	55	83	45					
48	145.64	151	12	0.55	15	40	63	25	1.00	SS41 (BW TYPE)	19	55	83	45		SS41 (DUPLEX BWTYPE)			
50	151.69	157	12	0.59	15	40	63	25	1.05		19	55	83	45					
52											19	55	83	45					
54	163.80	169	12	0.68	15	40	63	25	1.20		19	65	93	50					
60	181.99	187	12	0.87	15	40	63	25	1.30		19	65	93	50					
65	197.15	203	14	1.00	15	42	68	25	1.60		19	65	93	50					
70	212.29	218	14	1.18	15	42	68	25	1.70		19	65	93	50					
75	227.46	233	14	1.37	15	42	68	25	1.80		19	65	93	50					
80	242.62	248	15	1.37	15	42	68	25	1.80		19	65	93	50					

NOTE: 1. Sprocket marked with an asterisk (*) has a groove at the external circumference of hub. Groove diameters (Dg) are : 8T=13.92mm, 9T=17.02mm, 10T=20.07mm, 11T=23.11mm, 12T=25.91mm, 13T=28.96mm.

2. B-type solid sprockets over 40 teeth made by S35C are available.