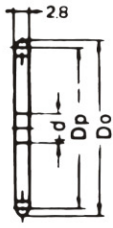
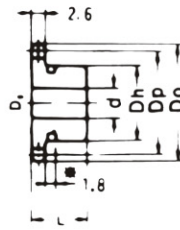


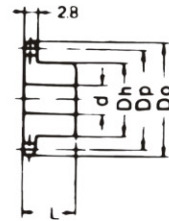
A TYPE



B TYPE



B TYPE



Dimension:mm

No. of Teeth	Pitch Dia. Dp	Outside Dia. Do	A Type			B Type					
			Bore: d	Approx. WT.(kg)	Material	Bore: d		Hub		Approx. WT.(kg)	Material
						Min.	Max.	Dh	L		
9	18.57	21	6	0.005	SS41	6	7	13	15	0.014	*
10	20.55	23	6	0.007		6	9	14	15	0.018	*
11	22.54	25	6	0.008		6	10	16	15	0.023	*
12	24.53	28	6	0.010		6	12	18	15	0.030	*
13	26.53	30	6	0.011		6	14	20	20	0.048	*
14	28.54	32	6	0.013		6	14	20	20	0.051	
15	30.54	34	6	0.015		6	14	20	20	0.053	
16	32.55	36	6	0.018		8	19	25	20	0.077	
17	34.56	38	6	0.020	8	19	25	20	0.079		
18	36.57	40	6	0.022	8	19	25	20	0.081		
19	38.58	42	6	0.025	8	19	25	20	0.084		
20	40.59	44	6	0.028	8	19	25	20	0.087		
21	42.61	46	6	0.031	8	22	30	20	0.119		
22	44.62	48	8	0.033	8	22	30	20	0.121		
23	46.63	50	8	0.036	8	22	30	20	0.124		
24	48.65	52	8	0.039	8	22	30	20	0.127		
25	50.66	54	8	0.043	8	25	35	20	0.165		
26	52.68	56	8	0.046	8	30	40	20	0.208		
27	54.70	58	8	0.050	8	30	40	20	0.212		
28	56.71	60	8	0.054	8	30	40	20	0.216		
29	58.73	62	8	0.058	8	35	45	25	0.324		
30	60.75	64	10	0.062	8	35	45	25	0.328		
31	62.77	66	10	0.066	10	35	45	25	0.328		
32	64.78	68	10	0.070	10	40	50	25	0.396		
33	66.80	70	10	0.075	10	40	50	25	0.401		
34	68.82	72	10	0.079	10	40	50	25	0.405	S35C	
35	70.84	74	10	0.084	10	40	50	25	0.410		
36	72.86	76	10	0.089	10	40	50	25	0.415		
37	74.88	78	10	0.095	10	40	50	25	0.421		
38	76.90	80	10	0.100	10	40	50	25	0.426		
39	78.91	82	10	0.105	10	40	50	25	0.431		
40	80.93	84	10	0.111	10	40	50	25	0.437		
41	82.95	87	10	0.116	10	40	50	25	0.442		
42	84.97	89	10	0.122	10	40	50	25	0.448		
43	86.99	91	10	0.128	10	40	50	25	0.454		
44	89.01	93	10	0.134	10	40	50	25	0.460		
45	91.03	95	10	0.140	10	40	50	25	0.466		
46	93.05	97	10	0.147	10	40	50	25	0.473		
47	95.07	99	10	0.153	10	40	50	25	0.479		
48	97.09	101	10	0.160	10	40	50	25	0.486		
50	101.13	105	10	0.174	10	40	50	25	0.500		
54	109.21	113	10	0.202	10	40	50	25	0.528		
60	121.33	125	10	0.251	10	40	50	30	0.651		
65	131.43	135	10	0.294	12	40	50	30	0.720		
70	141.54	145	10	0.342	12	40	50	30	0.770		
75	151.64	155	12	0.392	12	40	50	30	0.820		
80	161.74	165	12	0.446	12	40	50	30	0.880		

NOTE:1.Sprocket marked with an asterisk (*) has a groove at the external circumference of hub. Groove diameters (Dg) are : 9T=10.50mm, 10T=12.50mm, 11T=14.50mm, 12T=16.50mm, 13T=18.50mm.